

# THE JOURNEY PROJECT

Sexual harassment in the workplace can exist at any level of an organization. Clients, customers, supervisors, and managers are the most commonly reported source of harassment. <sup>[1]</sup>

**Everyone deserves to feel safe at work.**



Healthcare settings, sales and service and trades-related industries have the highest reported rates of sexual harassment in the workplace in Canada.

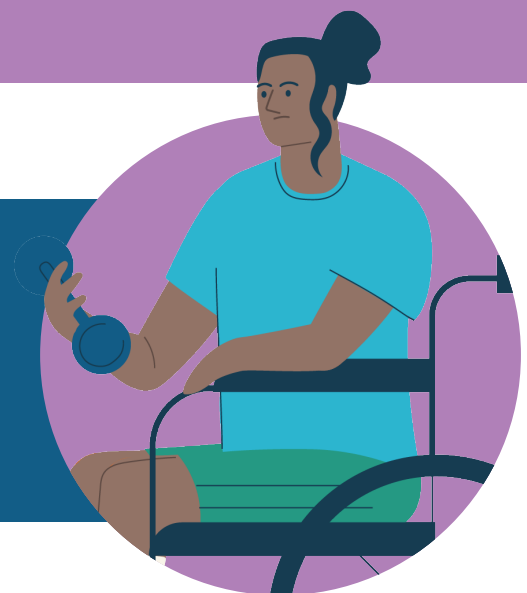
Women are more likely to experience sexual harassment than men.

52% of women reported being the target of sexual harassment in the workplace<sup>[2]</sup>



Indigenous women and 2SLGBTQIA+ people are three times more likely to experience workplace sexual harassment.

In Canada, the most common type of workplace harassment is verbal abuse <sup>[3]</sup>



☎ 709-722-2805 or 1-833-722-2805

💬 709-986-2801

✉ support@journeyprojectnl.com

Mon – Fri: 9:00 am – 4:00 pm

**The Journey Project: Navigating Your Journey, Together.**

[www.journeyproject.ca](http://www.journeyproject.ca)

